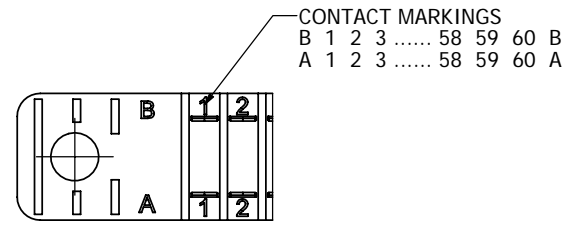
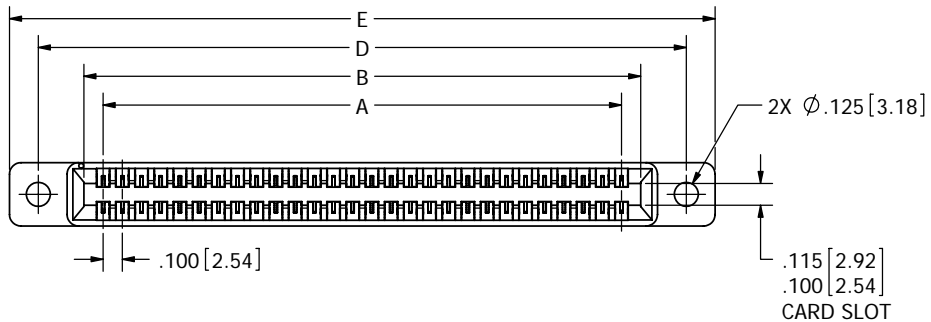
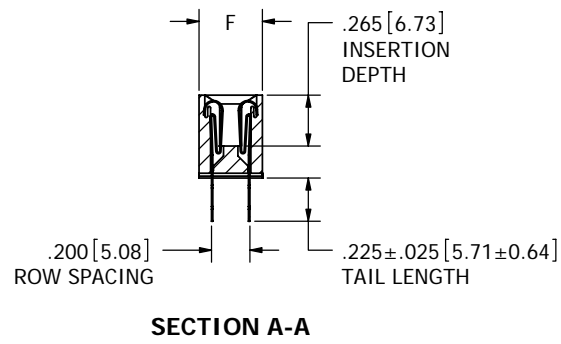
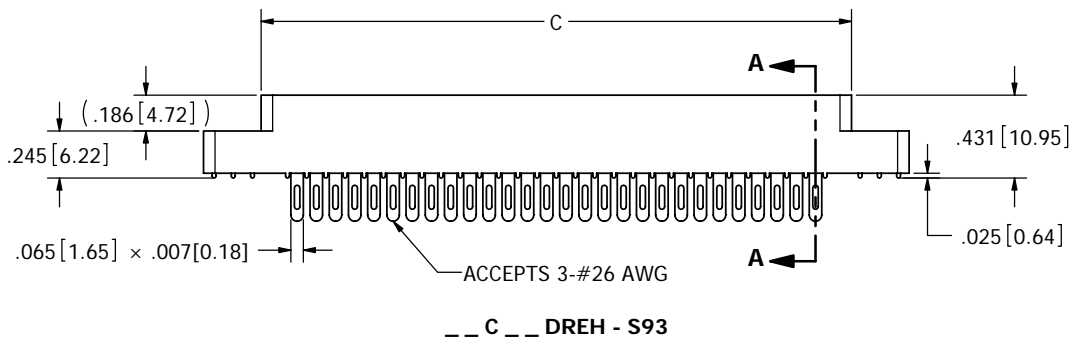


REVISIONS				
REV.	ECO. NO	DESCRIPTION	DATE	BY
A	1025	INITIAL RELEASE	5/15/2006	HT

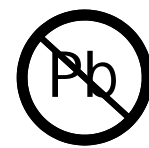


CONTACT ID  
SCALE 4:1



SECTION A-A

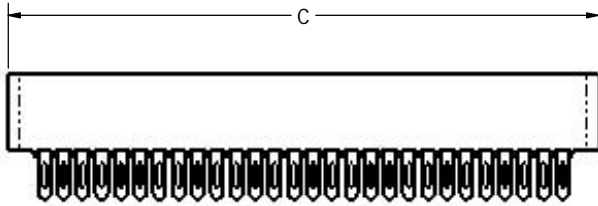
- NOTES:
1. INSULATOR MATERIAL: SEE PART NUMBER CODING.
  2. CONTACT MATERIAL: SEE PART NUMBER CODING.
  3. PLATING: SEE PART NUMBER CODING.
  4. TEMPERATURE: SEE PART NUMBER CODING.
  5. PROCESSING TEMP: SEE PART NUMBER CODING.
  6. UL FLAMMABILITY RATING: 94V-0.
  7. VOLTAGE RATING: 600 VDC MINIMUM AT SEA LEVEL.
  8. CURRENT RATING: 3 AMP PER CONTACT.
  9. VOLTAGE DROP: 30 MILLI VOLT AT RATED CURRENT.
  10. INSULATION RESISTANCE: 5000 MEGA OHM.
  11. CONNECTOR IDENTIFICATION: THE PART SHALL BE MARKED WITH A PART NUMBER AND BARCODE.
  12. BOARD THICKNESS ACCOMMODATED: .093 ± .008 [2.36 ± 0.20].
  13. BOARD INSERTION FORCE: 16 OZ MAX PER CONTACT PAIR WHEN USING A .093 [2.36] TEST BLADE. INTERNAL INSPECTION TO BE PER SULLIN'S WORK INSTRUCTION W17.3-01.
  14. BOARD WITHDRAWAL FORCE: 1 OUNCE MINIMUM PER CONTACT PAIR USING .093 [2.36] PCB.
  15. MODIFICATION: FOR .093 [2.36] BOARD.



RoHS COMPLIANT

CUSTOMER COPY

UNLESS OTHERWISE SPECIFIED: DIMENSIONS ARE IN INCHES[MM] TOLERANCES: ANGULAR: ± 30' XX ± .02 [508] XXX ± .005 [1270] XXXX ± .0005 [0127] SURFACE FINISH: 63 Ra REMOVE ALL BURRS AND SHARP EDGES .010 MAX		DATE 5/15/2006	NAME HT/VJ	
THE INFORMATION HEREIN CONTAINS PROPRIETARY INFORMATION OF SULLINS ELECTRONICS AND IS NOT TO BE REPRODUCED, USED OR DISCLOSED TO OTHERS FOR ANY PURPOSE EXCEPT AS SPECIFICALLY AUTHORIZED IN WRITING BY AN OFFICER OF SULLINS ELECTRONICS.		DESCRIPTION EDGE CARD, 100 CC, LP, .093 PCB		
INTERPRET DIMENSIONS AND GEOMETRIC TOLERANCING PER: ANSI Y14.5M-1994		PART NUMBER C_DRE - S93		SIZE C
		DWG. NO. C10720		REV A
		SCALE: 2:1		SHEET 1 OF 3



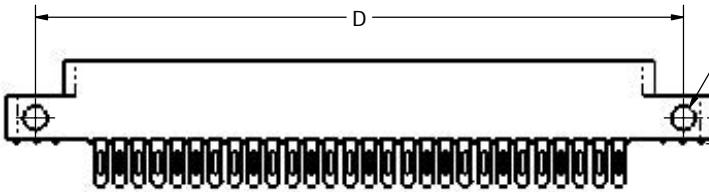
\_\_ C \_\_ DREN - S93

2X #4-40  
THREADED  
INSERTS

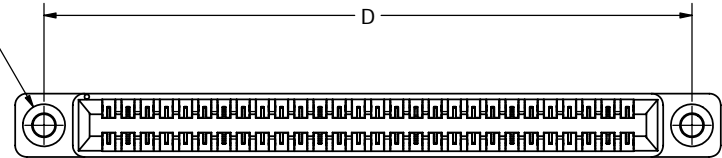


\_\_ C \_\_ DREI - S93

2X FLOATING BOBBIN  
.116[2.95] CLEARANCE  
FOR #4 SCREW



\_\_ C \_\_ DRES - S93



\_\_ C \_\_ DREF - S93

### CUSTOMER COPY



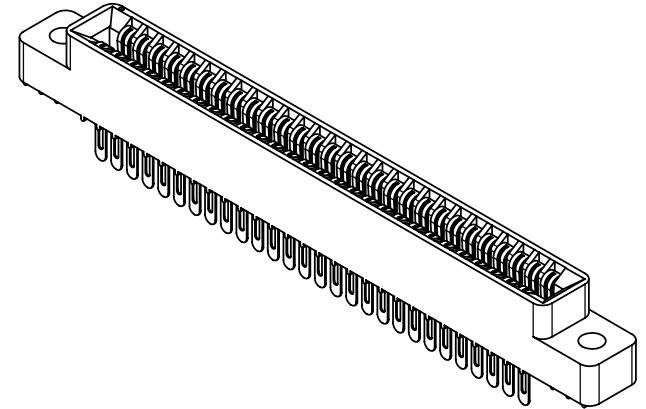
RoHS COMPLIANT

UNLESS OTHERWISE SPECIFIED:  
DIMENSIONS ARE IN INCHES[MM]  
TOLERANCES:  
ANGULAR: ± 30°  
XX ± .02 [508]  
XXX ± .005 [1270]  
XXXX ± .0005 [0127]  
SURFACE FINISH: 63 Ra  
REMOVE ALL BURRS AND SHARP EDGES .010 MAX

INTERPRET DIMENSIONS AND GEOMETRIC TOLERANCING PER: ANSI Y14.5M-1994

DRAWN	5/15/2006	DATE	HT/VJ	NAME
THE INFORMATION HEREIN CONTAINS PROPRIETARY INFORMATION OF SULLINS ELECTRONICS AND IS NOT TO BE REPRODUCED, USED OR DISCLOSED TO OTHERS FOR ANY PURPOSE EXCEPT AS SPECIFICALLY AUTHORIZED IN WRITING BY AN OFFICER OF SULLINS ELECTRONICS.				
DESCRIPTION		EDGE CARD, 100 CC, LP, .093 PCB		
PART NUMBER		C_C_DRE_S93		
SIZE	DWG. NO.	REV		
C	C10720	A		
SCALE: 2:1		SHEET 2 OF 3		

PART NUMBER	POS.	A±.008[0.20]		B±.008[0.20]		C±.015[0.38]		D±.010[0.25]		E±.020[0.51]		F±.005[0.13]	
		INCH	MM	B	MM	INCH	MM	INCH	MM	INCH	MM	INCH	MM
_C04DRE_S93*	4	0.300	7.62	0.500	12.70	0.675	17.15	0.975	24.77	1.275	32.39	0.330	8.38
_C05DRE_S93	5	0.400	10.16	0.600	15.24	0.775	19.69	1.075	27.31	1.375	34.93		
_C06DRE_S93	6	0.500	12.70	0.700	17.78	0.875	22.23	1.175	29.85	1.475	37.47		
_C07DRE_S93	7	0.600	15.24	0.800	20.32	0.975	24.77	1.275	32.39	1.575	40.01		
_C08DRE_S93	8	0.700	17.78	0.900	22.86	1.075	27.31	1.375	34.93	1.675	42.55		
_C10DRE_S93	10	0.900	22.86	1.100	27.94	1.275	32.39	1.575	40.01	1.875	47.63		
_C12DRE_S93	12	1.100	27.94	1.300	33.02	1.475	37.47	1.775	45.09	2.075	52.71		
_C13DRE_S93	13	1.200	30.48	1.400	35.56	1.575	40.01	1.875	47.63	2.175	55.25		
_C15DRE_S93	15	1.400	35.56	1.600	40.64	1.775	45.09	2.075	52.71	2.375	60.33		
_C17DRE_S93	17	1.600	40.64	1.800	45.72	1.975	50.17	2.275	57.79	2.575	65.41		
_C18DRE_S93	18	1.700	43.18	1.900	48.26	2.075	52.71	2.375	60.33	2.675	67.95		
_C19DRE_S93	19	1.800	45.72	2.000	50.80	2.175	55.25	2.475	62.87	2.775	70.49		
_C20DRE_S93	20	1.900	48.26	2.100	53.34	2.275	57.79	2.575	65.41	2.875	73.03		
_C22DRE_S93	22	2.100	53.34	2.300	58.42	2.475	62.87	2.775	70.49	3.075	78.11		
_C23DRE_S93	23	2.200	55.88	2.400	60.96	2.575	65.41	2.875	73.03	3.175	80.65		
_C25DRE_S93	25	2.400	60.96	2.600	66.04	2.775	70.49	3.075	78.11	3.375	85.73		
_C26DRE_S93	26	2.500	63.50	2.700	68.58	2.875	73.03	3.175	80.65	3.475	88.27		
_C28DRE_S93	28	2.700	68.58	2.900	73.66	3.075	78.11	3.375	85.73	3.675	93.35		
_C30DRE_S93	30	2.900	73.66	3.100	78.74	3.275	83.19	3.575	90.81	3.875	98.43		
_C31DRE_S93	31	3.000	76.20	3.200	81.28	3.375	85.73	3.675	93.35	3.975	100.97		
_C35DRE_S93	35	3.400	86.36	3.600	91.44	3.775	95.89	4.075	103.51	4.375	111.13		
_C36DRE_S93	36	3.500	88.90	3.700	93.98	3.875	98.43	4.175	106.05	4.475	113.67		
_C40DRE_S93	40	3.900	99.06	4.100	104.14	4.275	108.59	4.575	116.21	4.875	123.83		
_C43DRE_S93	43	4.200	106.68	4.400	111.76	4.575	116.21	4.875	123.83	5.175	131.45		
_C44DRE_S93	44	4.300	109.22	4.500	114.30	4.675	118.75	4.975	126.37	5.275	133.99		
_C49DRE_S93	49	4.800	121.92	5.000	127.00	5.175	131.45	5.475	139.07	5.775	146.69		
_C50DRE_S93	50	4.900	124.46	5.100	129.54	5.275	133.99	5.575	141.61	5.875	149.23		
_C52DRE_S93*	52	5.100	129.54	5.300	134.62	5.475	139.07	5.775	146.69	6.075	154.31		
_C60DRE_S93	60	5.900	149.86	6.100	154.94	6.275	159.39	6.575	167.01	6.875	174.63		
_C65DRE_S93	65	6.400	162.56	6.600	167.64	6.775	172.09	7.075	179.71	7.375	187.33		



\* = CONSULT FACTORY FOR AVAILABILITY

### PART NUMBER CODING

\_\_ C \_\_ DRE \_\_ - S93

#### MATERIAL (INSULATOR/CONTACT)

- E = PBT/PHOSPHOR BRONZE**  
OPERATING TEMP: -65°C TO +125°C  
PROCESSING TEMP: 260°C FOR 10 SECS MAX
- R = PPS/PHOSPHOR BRONZE**  
OPERATING TEMP: -65°C TO +125°C  
PROCESSING TEMP: 260°C FOR 120 SECS MAX
- G = PA9T/PHOSPHOR BRONZE**  
OPERATING TEMP: -65°C TO +125°C  
PROCESSING TEMP: 260°C FOR 120 SECS MAX
- H = PBT/BERYLLIUM COPPER**  
OPERATING TEMP: -65°C TO +125°C  
PROCESSING TEMP: 260°C FOR 10 SECS MAX
- A = PPS/BERYLLIUM COPPER**  
OPERATING TEMP: -65°C TO +150°C  
PROCESSING TEMP: 260°C FOR 120 SECS MAX
- J = PA9T/BERYLLIUM COPPER**  
OPERATING TEMP: -65°C TO +150°C  
PROCESSING TEMP: 260°C FOR 120 SECS MAX  
(CONSULT FACTORY FOR OTHER MATERIALS)

#### NUMBER OF POSITIONS (CONTACTS PER ROW)

#### PLATING

- ALL PLATINGS ARE LEAD FREE AND HAVE .000050" NICKEL UNDERPLATE
- |   |                          |
|---|--------------------------|
| CONTACT SURFACE                         | TERMINATION              |
| G = .000010" GOLD                       | .000005" GOLD            |
| Y = .000030" GOLD                       | .000005" GOLD            |
| B = .000010" GOLD                       | .000100" PURE TIN, MATTE |
| C = .000030" GOLD                       | .000100" PURE TIN, MATTE |
| **E = .000100" PURE TIN, MATTE, OVERALL |                          |
| S = .000010" GOLD OVERALL               |                          |
| M = .000030" GOLD                       | .000010" GOLD OVERALL    |

#### MOUNTING STYLE

- H = .125" DIA. CLEARANCE HOLES (PAGE 1)
- N = NO MOUNTING EARS (PAGE 2)
- S = .125" DIA. SIDE MOUNTING (PAGE 2)
- I = #4-40 THREADED INSERT (PAGE 2)
- F = FLOATING BOBBIN (PAGE 2)

\*\* OVERALL TIN ONLY AVAILABLE ON MATERIAL CODES E, R AND G



RoHS COMPLIANT

## CUSTOMER COPY

UNLESS OTHERWISE SPECIFIED:  
DIMENSIONS ARE IN INCHES[MM]  
TOLERANCES:  
ANGULAR: ± 30°  
XX ± .02 [508]  
XXX ± .005 [1270]  
XXXX ± .0005 [0127]  
SURFACE FINISH: 63 Ra  
REMOVE ALL BURRS AND SHARP EDGES .010 MAX

INTERPRET DIMENSIONS AND GEOMETRIC TOLERANCING PER: ANSI Y14.5M-1994

DRAWN	5/15/2006	DATE	HT/VJ	NAME
THE INFORMATION HEREIN CONTAINS PROPRIETARY INFORMATION OF SULLINS ELECTRONICS AND IS NOT TO BE REPRODUCED, USED OR DISCLOSED TO OTHERS FOR ANY PURPOSE EXCEPT AS SPECIFICALLY AUTHORIZED IN WRITING BY AN OFFICER OF SULLINS ELECTRONICS.				
DESCRIPTION <b>EDGE CARD, 100 CC, LP, .093 PCB</b>				
PART NUMBER <b>_C_DRE_S93</b>				
SIZE	DWG. NO.	REV		
<b>C</b>	<b>C10720</b>	<b>A</b>		
SCALE: 3:1			SHEET 3 OF 3	